

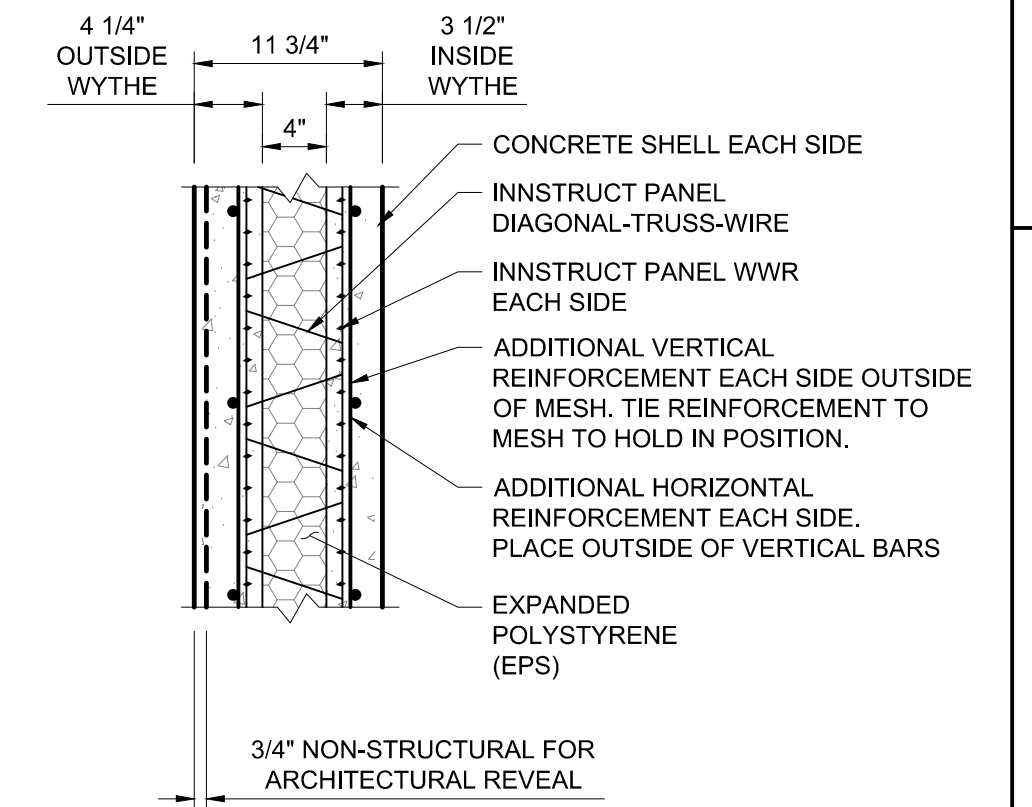
TIPS REINFORCING
3/8" = 1'-0"

LIMITATION OF COMPARISON:
TIPS COMPARISON DRAWINGS ARE PRELIMINARY
AND ARE SUBJECT TO CHANGE BASED ON FINAL
DESIGN.

BAR SIZE LEGEND:

- #3 - CYAN
- #4 - BLUE
- #5 - RED
- #6 - GREEN
- #7 - PURPLE
- #8 - PINK

TIE BAR - - - - (SIZE PER COLOR)



TYPICAL TIPS SECTION
SCALE: N.T.S.

TIPS
4-1/4" EXTERIOR CONCRETE WYTHE (COMPOSITE)
4" EPS INSULATION
3-1/2" INTERIOR CONCRETE WYTHE (COMPOSITE)
11-3/4" TOTAL THICKNESS

PRELIMINARY DRAWING NOT FOR CONSTRUCTION							FORSGREN Associates Inc.
PROJECT NO. 11 DRAWN _____ DESIGNED _____ APPROVED _____ QA/QC _____							REVISIONS NO. _____ BY _____ DATE _____ <small>This document or any part thereof in detail or design is the property of Forsgren Associates Inc. and shall not be distributed or used without the written authorization of Forsgren Associates Inc.</small>
INNOVATIVE STRUCTURAL SOLUTIONS							PROJECT 11B
TIPS COMPARISON							TIPS COMPARISON
SHEET NO. _____							DATE: NOVEMBER 2020
PAGE NO. _____							